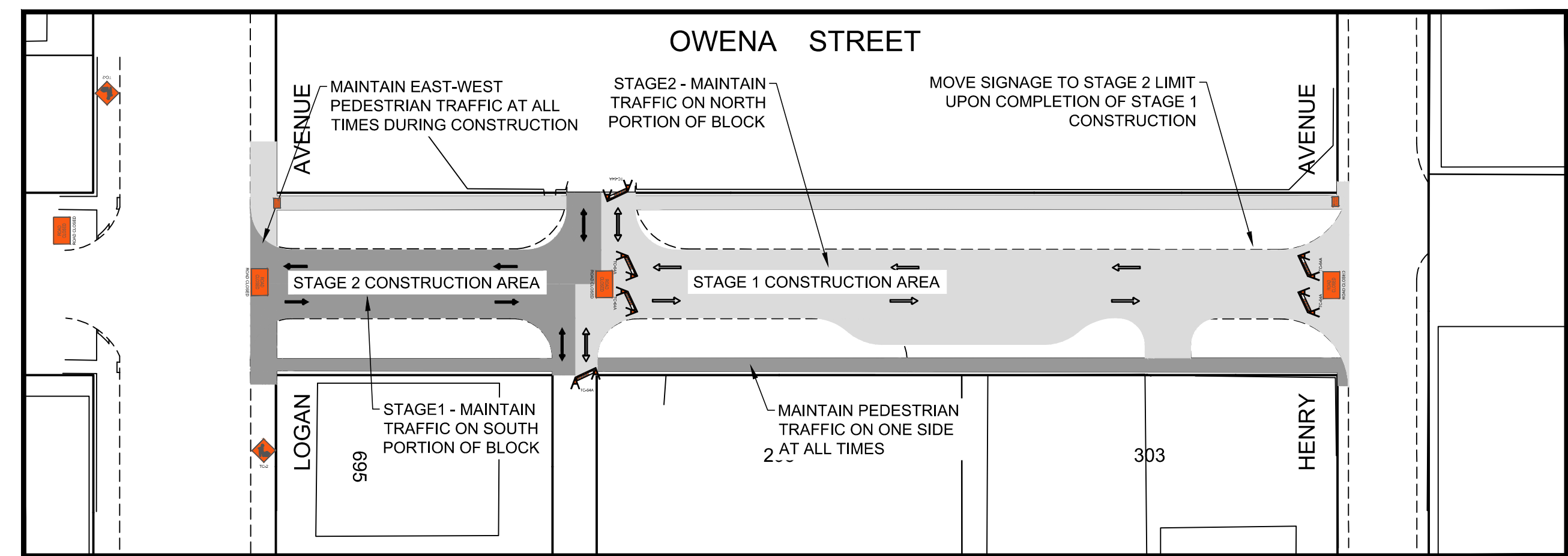
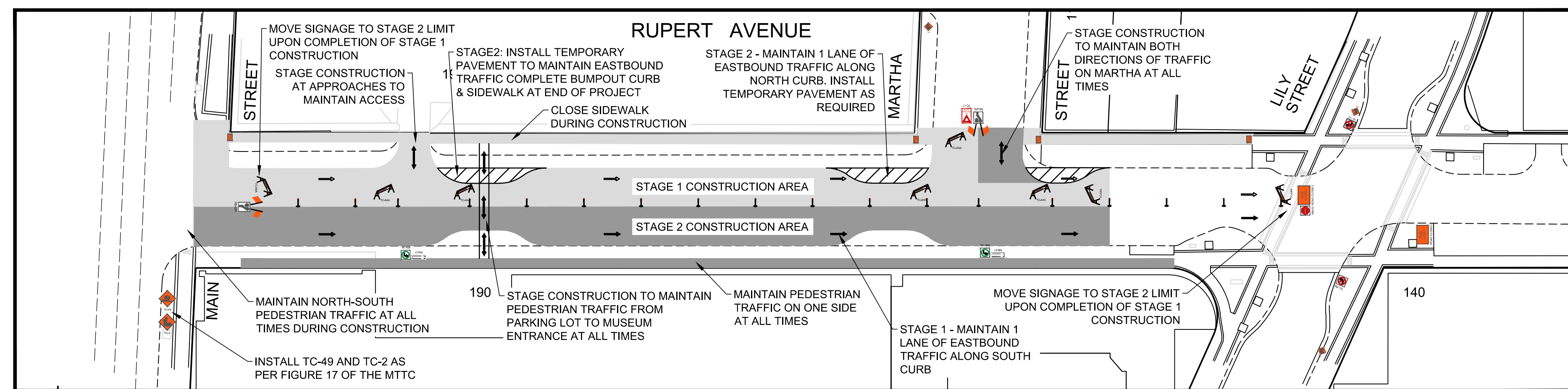


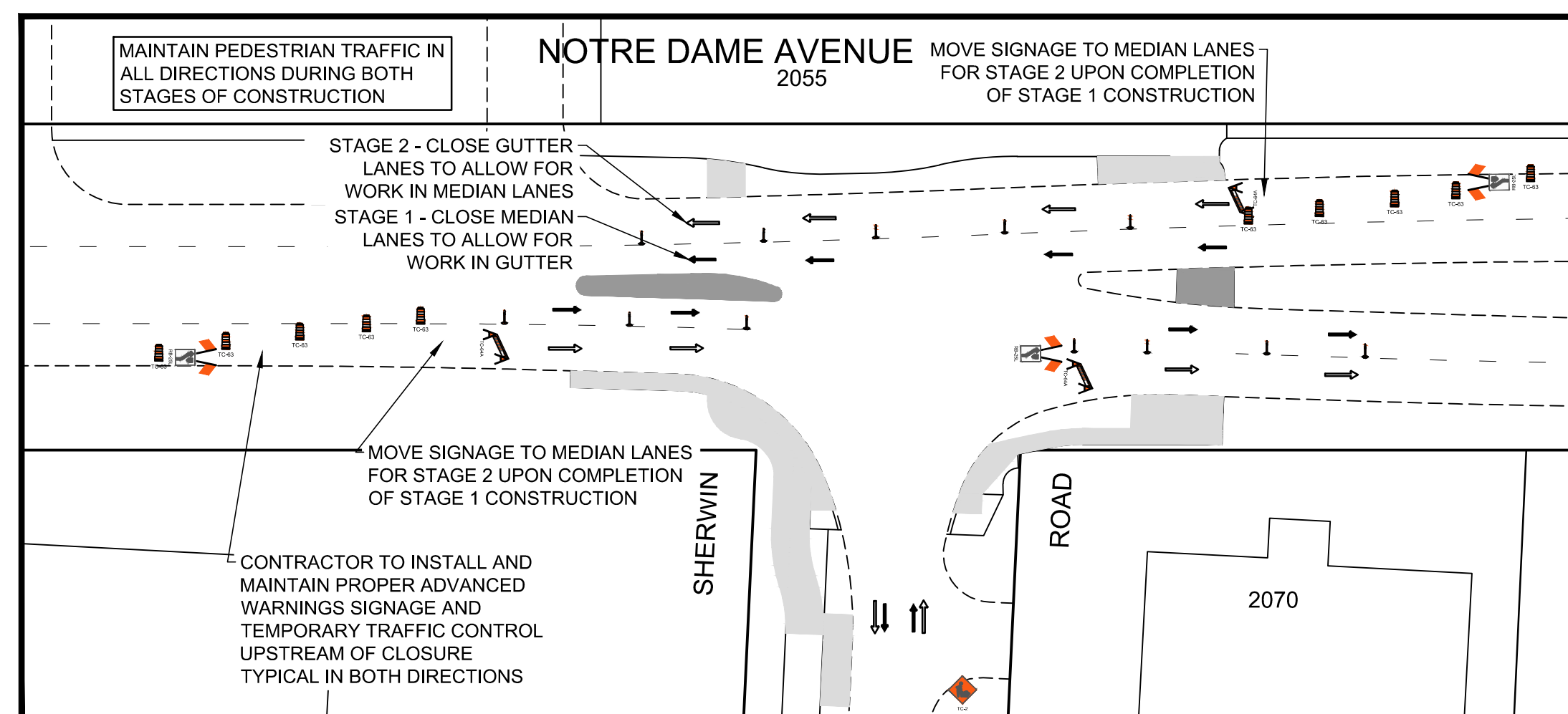
BEACON STREET - ALEXANDER AVENUE TO LOGAN AVENUE - PLAN VIEW



OWENA STREET - LOGAN AVENUE TO HENRY AVENUE - PLAN VIEW




RUPERT AVENUE - MAIN STREET TO MARTHA STREET - PLAN VIEW



NOTRE DAME AVENUE AT SHERWIN ROAD - PLAN VIEW

LEGEND

 STAGE 1 WORK AREA
 STAGE 2 WORK AREA

 STAGE 2 WORK AREA

→ STAGE 1 TRAFFIC

⇒ STAGE 2 TRAFFIC

- NOTES:
1. ALL TEMPORARY SIGNAGE AND TRAFFIC CONTROL TO BE IN ACCORDANCE WITH THE LATEST EDITION OF THE MANUAL OF TEMPORARY TRAFFIC CONTROL ON CITY STREETS.
 2. CONTRACTOR TO MAINTAIN VEHICLE ACCESS TO ALL SIDE STREETS, PRIVATE APPROACHES AT ALL TIMES UNLESS NOTED BY THE CONTRACT ADMINISTRATOR. ANY DISRUPTION TO BE APPROVED BY THE CONTRACT ADMINISTRATOR AND CONTRACTOR TO ADVISE OWNER.
 3. PROPERLY EQUIPPED FLAG PERSONS ARE REQUIRED WHEN MOVING ANY CONSTRUCTION VEHICLES INTO OR OUT OF TRAFFIC.
 4. CONTRACTOR TO INSTALL AND MAINTAIN ALL REQUIRED SIGNAGE. CONTRACTOR IS RESPONSIBLE FOR TRAFFIC CONTROL SIGNAGE AND REGULATORY SIGNAGE, WHICH INCLUDES POSTING PARKING RESTRICTIONS FOR CONSTRUCTION ACCESS.
 5. TYPICAL SPACING BETWEEN POLYPOSTS IS 9.0m.

LOCATION APPROVED UNDERGROUND STRUCTURES				B.M. ELEV.				<div>AECOM</div>				<div>ENGINEER'S SEAL</div> <div><div>PROVINCE OF MANITOBA</div><div>FINDLAY</div><div>Member</div><div>23820</div><div>2025-04-21</div><div>REGISTERED PROFESSIONAL ENGINEER</div></div>				<div><div><div><div></div></div></div><div>THE CITY OF WINNIPEG</div><div>PUBLIC WORKS DEPARTMENT</div><div>ENGINEERING DIVISION</div></div>			
SUPV. U/G STRUCTURES COMMITTEE		DATE																	
NOTE: LOCATION OF UNDERGROUND STRUCTURES AS SHOWN ARE BASED ON THE BEST INFORMATION AVAILABLE. BUT NO GUARANTEE IS GIVEN THAT ALL EXISTING UTILITIES ARE SHOWN OR THAT THE GIVEN LOCATIONS ARE EXACT. CONFIRMATION OF EXISTENCE AND EXACT LOCATION OF ALL SERVICES MUST BE OBTAINED FROM THE INDIVIDUAL UTILITIES BEFORE PROCEEDING WITH CONSTRUCTION.								DESIGNED BY		SDF		CHECKED BY		SS					
								DRAWN BY		SDF		APPROVED BY		TLF					
								HOR. SCALE:		1:500		RELEASED FOR CONSTRUCTION BY:							
								VERTICAL:		N/A									
0 ISSUED FOR TENDER				2025/04/22				TLF											
A ISSUED FOR REVIEW				2025/04/09				TLF											
NO. REVISIONS		DATE		BY		DATE		03/19/2025		DATE									
												<div>CONSULTANT DRAWING NO.</div> <div>CT-02</div>							
												<div>2025 INDUSTRIAL STREET</div> <div>RENEWAL PROGRAM</div>							
												<div>CITY DRAWING NUMBER</div> <div>SHEET 02 OF 17</div>							
												<div>BEACON STREET - ALEXANDER AVENUE TO LOGAN AVENUE</div> <div>OWENA STREET - LOGAN AVENUE TO HENRY AVENUE</div> <div>RUPERT AVENUE - MAIN STREET TO MARTHA STREET</div> <div>NOTRE DAME AT SHERWIN ROAD</div> <div>CONSTRUCTION STAGING PLAN</div>							